

09/23/2020

**Shanghai Rainbow Industrial Co.,Ltd.
(Manufacturer)**



About Factory



Shanghai Rainbow Industrial Co.,Ltd was established in 2008, located in Shanghai, with convenient transportation to Pudong and Hongqiao airport.

We're an professional company engaged in standard and customized plastic package, triggers, sprayers, pumps and a comprehensive excellent packaging solutions for supermarket, skin care industry, makeup salon, distributor, wholesaler across the world. We provide higher quality, middle quality OEM & ODM products with reasonable price. Rainbow Package has a great number of loyal customers, many from American, Canada, Europe, Oceania and East Asia market. With our rich export expensive, high quality products, best service, on time delivery, we are certain that we can meet all of your requirements and exceed your expectation.

Production Room



Trigger Sprayer parts assembly



Certificates



Celcon® CE66 FC SF2001 NATURAL
Celcon® CE67 FC SF2001 NATURAL

March 18, 2019

Food Contact Declaration

Please note that the manufacturer or seller of parts and articles made out of the above mentioned products have to take the full responsibility regarding applicable legal requirements. The suitability of the finished article for the intended application (e. g. with respect to global migration limits) has to be checked by the manufacturer or seller.

When manufacturing above listed products Celanese Engineered Materials complies with the Food Contact Framework Regulation (EC) 1935/2004 and the guidelines laid down in the Regulation (EC) 2023/2006.

A food contact approval is related to the final product and to its intended use. A raw material, such as the above listed Celanese Engineered Materials, are only ingredients of the final products. Consequently, Celanese is not in a position to give a general statement regarding the compliance with applicable food contact regulations, such assessment being in the field of control and responsibility of the manufacturer of the final article.

EU: Regulation (EU) 10/2011¹

The Food Contact Framework Regulation (EC) 1935/2004 sets out the general rules for all classes of food contact materials without giving any specific rule of how to prove the safety of food contact articles. Plastic materials, e.g. polymers compounds as sold by Engineered Materials are regulated by Regulation (EU) 10/2011 and its amendments.

The monomers and additives used for the manufacturing of the above mentioned product are listed in the regulation (EU) 10/2011 from January 14th, 2011.

The above mentioned polymer compounds contain monomers and additives which are regulated with a specific migration limit. If required, we will disclose this confidential formulation information to a suitable third party test institute (laboratory) on the basis of a secrecy agreement.

To fully comply with food regulations in Europe, the finished plastic article needs to comply with, amongst other things, Overall Migration Limit requirements and Specific Migration Limits as specified in (EU) 10/2011 when tested on the food contact surface with the appropriate food simulants and time/temperature test conditions. **This is the responsibility of the manufacturer of the final article.**

¹ including all amendments published before the date of this statement
Celanese Services Germany GmbH, Managing Directors: Jens Kuhn, Michael Wilms - Registered place of business: Kienbergstr. 1
Darmstadt 61254, Germany - 0618 222 1423



测试报告 No. CANEC1702642302 日期: 2017年03月02日 第1页,共16页
(SVHC)

常州永富石化有限公司常州分公司
常州永富石化有限公司常州分公司

以下测试之样品由申请者所提供及确认: 共富树脂

SGS工作编号: CQ17809729 - CQ
型号: M90
客户参考号: M26/M60/CM90/M120/270/M360/M460
测试成分: 五聚甲醛-二氧戊环
制造商: 常州永富石化有限公司常州分公司
样品接收日期: 2017年02月24日
测试周期: 根据客户要求, 2017年02月24日 - 2017年03月02日
测试要求: 根据客户要求,
(1) 基于欧洲化学管理局根据2017年1月12日公布的授权认证的有害物质清单 (根据欧盟第1907/2006号REACH法规), 对173种有害物质(SVHC)进行筛查测试。
测试结果: 请参考下一页

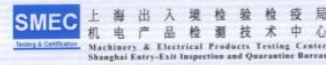
备注:	根据具体的范围将部分测试, 筛选列表中SVHC的测试结果0.1% (w/w),	通过
-----	---	----

通特标准技术服务有限公司广州分公司
授权签名

张强
Trophy Zhang 张强
批准编号: 8

备注: 本样号系编号为CANEC1702642301报告中的子报告

Member of the SGS Group (ISSS SA)



测试报告
TEST REPORT



Ref No.: 201602282751-1
Date: 4/5/2016
Page: 1 of 6
正本/ORIGINAL

申请单位: 中国石化镇海炼化分公司
Applicant: SINOPEC Zhenhai Refining & Chemical Company
地址: 浙江省宁波市镇海区蛟川街道(前港)
Address: Jiaochuan Street, Zhenhai District, Ningbo City, Zhejiang Province, China

样品名称 Sample Name: 聚丙烯树脂 Polypropylene resin
型号 Model No.: PPI1-T03
批号 Item No.: 201602206-1
材料 Material: 聚丙烯(均聚) PP

样品接收日期: 2016年3月25日
Date Received: Mar. 25, 2016
测试日期: 2016年3月25日-2016年4月5日
Test Period: Mar. 25, 2016 - Apr. 5, 2016
测试方法: 参考内页

测试方法: 请参考内页
测试结果: 请参考内页
Test Results: 请参考内页

结论: 送检样品中(Pb), 汞(Hg), 六价铬(Cr⁶⁺), 镉(Cd), 多溴联苯(PBBs) 和多溴联苯醚(PBDEs)的含量符合欧盟指令 2011/65/EU 的要求。
The contents of lead (Pb), mercury (Hg), hexavalent chromium (Cr⁶⁺), cadmium (Cd), polybrominated biphenyls (PBBs) and polybrominated diphenyl ethers (PBDEs) in the submitted samples conformed to requirements of the Directive 2011/65/EU of the European Parliament and of the Council.

授权签字 SIGNED FOR AND ON BEHALF OF
上海出入境检验检疫机电产品检测技术中心 SMC

戴雪伟
戴雪伟 DAIXUEWEI

说明: 本试验报告仅对送检样品有效, 未经本实验室书面批准不得部分复制本试验报告。
NOTE: ALL TEST RESULTS ARE ONLY VALID FOR THE SAMPLES BEING TESTED. THIS TEST REPORT SHALL NOT BE REPRODUCED EXCEPT IN FULL, WITHOUT THE WRITTEN APPROVAL OF THE TESTING LABORATORY.

地址 Address: 上海市浦东新区民生路 1208 号 (200135) / No. 1208, Minsheng Road, Shanghai, (200135) P.R. China
电话/Tel.: 86-21-6854 9667 传真/Fax: +86-21-6854 9665 邮箱/Email: SMC@shciq.gov.cn / P@shciq.gov.cn / Website: www.shciq.gov.cn / R01@SMC

MECT-0-151-01

0200536



Test Report No. NGBML1600771801 Date: 27 Mar 2016 Page 1 of 5
FORMOSA POLYPROPYLENE (NINGBO) CO., LTD.
FPG NINGBO INDUSTRIAL PARK BEILUN NINGBO, CHINA

The following sample(s) was/were submitted and identified on behalf of the client(s) as: POLYPROPYLENE HOMOPOLYMER

SGS Job No.: NBN160002061PC - NB
Material and Mark: 1120
Manufacturer: FORMOSA POLYPROPYLENE (NINGBO) CO., LTD.
Client Ref. Information: 1040, 1040F, 1080, 1124, 1124H, 1260, 1260F, 1362F, 1460T, 2100, 2100M, 2020S, 2020H, 2000WF
Date of Sample Received: 23 Mar 2016
Testing Period: 23 Mar 2016 - 27 Mar 2016
Test Requested: Selected test(s) as requested by client.
Test Method: Please refer to next page(s).
Test Results: Please refer to next page(s).

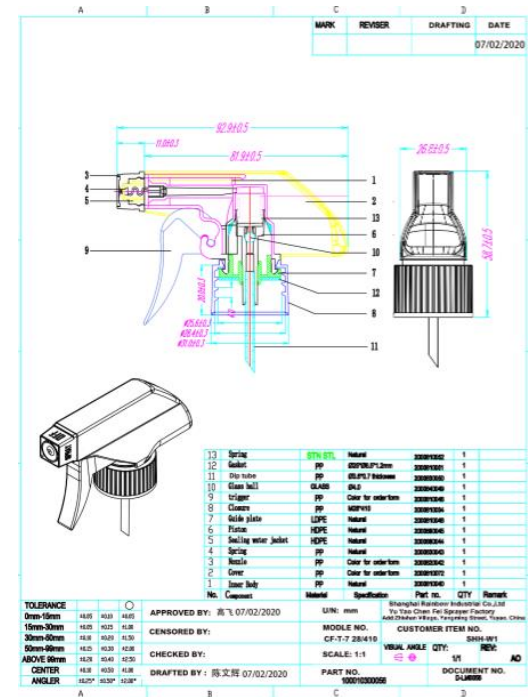
Signed for and on behalf of
SGS-CSTC Standards Technical Services Co., Ltd. Ningbo Branch

徐雪
Its Xiao
Approved Signatory



Member of the SGS Group (ISSS SA)

Trigger Sprayer



SHH

- ▶ Model Number : CF-T-7
- ▶ Testing Std. : SGS, CE, CNAS
- ▶ Clousure : 28/410
- ▶ Material: Plastic , 304#spring
- ▶ Discharge Rate: 1.0ml±20%

Trigger Sprayer



- ▶ **Model Number : RB-P-0201F**
- ▶ **Testing Std. : SGS, CE, CNAS**
- ▶ **Size : 28/400, 28/410**
- ▶ **Material: Plastic , 304#spring**
- ▶ **Discharge Rate: 1.0ml \pm 20%**

Trigger Sprayer



- ▶ **Model Number : RB-P-0201C**
- ▶ **Testing Std. : SGS, CE, CNAS**
- ▶ **Size : 28/400, 28/410, 28/415**
- ▶ **Material: Plastic , 304#spring**
- ▶ **Discharge Rate: 1.0ml \pm 20%**



Trigger Sprayer

- ▶ **Model Number : RB-P-0201D**
- ▶ **Testing Std. : SGS, CE, CNAS**
- ▶ **Size : 28/400, 28/410**
- ▶ **Material: Plastic , 304#spring**
- ▶ **Discharge Rate: 1.0ml \pm 20%**

Trigger Sprayer



SHH

- ▶ **Model Number : RB-P-0174**
- ▶ **Testing Std. : SGS, CE, CNAS**
- ▶ **Size : 28/400, 28/410**
- ▶ **Material: Plastic , 304#spring**
- ▶ **Discharge Rate: 1.0ml \pm 20%**

All Plastic Foam Trigger Sprayer



SHH

- ▶ **Model Number : LX-001**
- ▶ **Testing Std. : SGS, CE, CNAS**
- ▶ **Size : 28/400, 28/410, 28/415**
- ▶ **Material: All Plastic**
- ▶ **Discharge Rate: 1.3-1.4CC**

Simple Foam Trigger Sprayer



SHH

- ▶ **Model Number : LX-002**
- ▶ **Testing Std. : SGS, CE, CNAS**
- ▶ **Size : 28/400, 28/410, 28/415**
- ▶ **Material: Plastic , STN STL**
- ▶ **Discharge Rate: 1.0-1.2CC**

Double Shell Foam Trigger Sprayer



SHH

- ▶ **Model Number : LX-003**
- ▶ **Testing Std. : SGS, CE, CNAS**
- ▶ **Size : 28/400, 28/410, 28/415**
- ▶ **Material: Plastic , STN STL**
- ▶ **Discharge Rate: 1.1-1.3CC**

Double Shell All Plastic Trigger Sprayer



SHH

- ▶ **Model Number : LX-004**
- ▶ **Testing Std. : SGS, CE, CNAS**
- ▶ **Size : 28/400, 28/410, 28/415**
- ▶ **Material: All plastic**
- ▶ **Discharge Rate: 1.0ml \pm 20%**

Double Shell Trigger Sprayer



SHH

- ▶ **Model Number : YX31-11**
- ▶ **Testing Std. : SGS, CE, CNAS**
- ▶ **Size : 28/410**
- ▶ **Material: Plastic , 304#spring**
- ▶ **Discharge Rate: 0.8ml±10%**

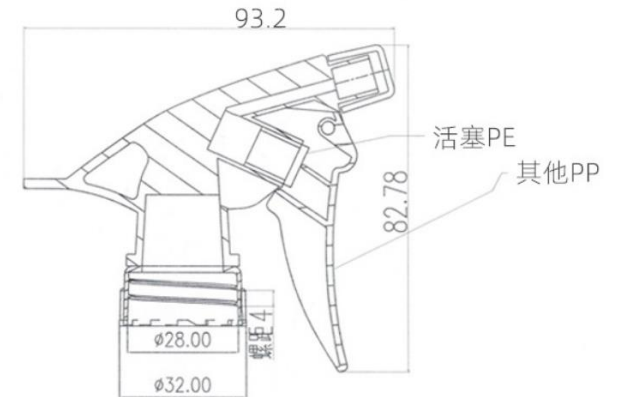
Full Plastic Sprayer bottle



SHH

- ▶ **Model Number : RB-P-0205**
- ▶ **Testing Std. : SGS, CE, CNAS**
- ▶ **Size : 28/410**
- ▶ **Material: All Plastic**
- ▶ **Discharge Rate: 0.8ml-1.3ml/T**

A Trigger Sprayer



- ▶ **Model Number : RB-P-0192**
- ▶ **Testing Std. : SGS, CE, CNAS**
- ▶ **Size : 28/400, 28/410**
- ▶ **Material: Plastic**
- ▶ **Discharge Rate: 1.0ml±20%**

Mini Trigger



SHH

- ▶ **Model Number : RB-P-0194**
- ▶ **Testing Std. : SGS, CE, CNAS**
- ▶ **Size : 24/410, 28/410**
- ▶ **Material: Plastic , 304#Spring**
- ▶ **Discharge Rate: 0.2-0.25ML/T**



HDPE Bottle

- ▶ **Model Number : RB-P-0199**
- ▶ **Testing Std. : CE, SGS**
- ▶ **Size : 500ml Neck size :28/400**
- ▶ **HDPE BOTTLE+ PP TRIGGER SPRAYER**

HDPE Bottle



SHH

- ▶ **Model Number : RB-P-0207**
- ▶ **Testing Std. : CE, SGS**
- ▶ **Size : 500ml Neck size :28/410**
- ▶ **HDPE BOTTLE+ PP TRIGGER SPRAYER**

Trigger Sprayer bottle



500ml



Full Height:
236mm

Diameter: 64mm

SHH

- ▶ **Model Number : RB-P-0153**
- ▶ **Testing Std. : FDA 21 CFR 177.1630 ; SGS**
- ▶ **Size : 500ml Neck size :24/410**
- ▶ **HDPE BOTTLE+ PP MINI TRIGGER SPRAYER**

Continus Trigger Sprayer bottle



SHH

- ▶ **Model Number : RB-P-0202**
- ▶ **Testing Std. : FDA 21 CFR 177.1630**
- ▶ **Size : 150ml/200ml/300ml**
- ▶ **PET BOTTLE+ PP TRIGGER SPRAYER**

Lotion Pump

SHH



- ▶ **Model Number : RB-P-0130**
- ▶ **Testing Std. : SGS**
- ▶ **Size : 24/410, 28/410**
- ▶ **Discharge rate: 2CC/T**

Clip Lock Lotion Pump



- ▶ **Model Number : RB-P-0271D**
- ▶ **Testing Std. : SGS**
- ▶ **Size : 20/410, 24/410, 28/410**
- ▶ **Discharge rate: 1.2CC/T**

Lotion Pump



- ▶ **Model Number : RB-P-0166**
- ▶ **Testing Std. : SGS**
- ▶ **Size : 24/410, 28/410**
- ▶ **Discharge rate: 2CC/T**

Lotion Pump

SHH



- ▶ **Model Number : RB-P-0165**
- ▶ **Testing Std. : SGS**
- ▶ **Size : 28/410**
- ▶ **Discharge rate: 4CC/T**

Thank You!

SHH



CONTACT US

Vicky

(86) 15921375189

Vicky@rainbow-pkg.com